



## Karuna Mission Social Solidarity-Bhamo

### COVID-19 Response | Situation Report

30<sup>th</sup> June 2020



*ER 1 Provision of Soaps to the community by Parish Volunteers in Loi Je Parish Priest Area.*

### Code of our Response

KMSS-BMO is responding to COVID-19 in closely collaboration with Parish Emergency Response Volunteers under the umbrella of Diocesan Emergency response committee in order of Bhamo Diocese Bishop.

### Situation Overview

**As of pandemic spread out globally, case no. 249 became the first case detected in Bhamo district on June 11<sup>th</sup> 2020 nationally and second case at Kachin State level.** The case is a government health personnel who is serving at Loi Je Station hospital and was rotated assigned at Medical checkpoint gate of Loi Je border gate where Myanmar Migrant workers returned from China. According to the announcement from District health department, the case is on isolation, care and treatment at Isolation ward in Banmaw and retesting resulted Negative. Relating to this case, contact persons more than 170 people have been tracked, tested and quarantined, all contact resulted Negative.

**By June 30<sup>th</sup>, according to the agreement between Myanmar Government and China Government, more than 10,000 migrant workers have returned to Myanmar through Loi Je and Kan Pai Ti gates.** Among those returnees, some percentages are IDPs population. However, in June, there have been fewer returnees from China. As resulting from first case detection, the movement in the area was more systematically restricted in line with Government Announcement, and the persons who has health certificates from health departments can go and back in KIO controlled areas and China government stopped entering Myanmar travelers to China.



As of beginning of COVID-19 pandemic, more than 1,000 IDPs have temporarily returned to the place of origin in order to avoid over population crowded in the camps. According to camp management, those returnees to VoO are not allowed to back into the camps if they don't undergo quarantine during this critical time, as well as restricted movement of the people living in the camps. By far, camp management allowed the humanitarian agencies to work in for only humanitarian assistance such as food/cash assistance and other COVID-19 response activities while still forbid to do activities not much related to responses and reliefs from this pandemic.

Due to this pandemic, economic impact is much significant in the camp population and host community both GCA<sup>1</sup> and NGCA<sup>2</sup>, since most of them are relying their incomes on the causal labors, much percentage of youth in the area are going to China to earn income from working in the sugar cane farms, rubber compounds, etc. As result of this impact, IDPs expressed the gap of food security although Government supported basic food. For GCA, WFP therefore agreed to provide blanket food distribution from June to August 2020, and for NGCA, the decision is under coordination between HARP-F and KMSS.

The most concerns of the community with long-term crisis are food insecurity, insufficient health care assistance, delay children education, and malnutrition in children, mothers and elderly persons and risky to more frequent robbery cases, and livelihoods concerns. Consequently, if long-term pandemic happens irregular or lack of income to them, their main concerns is to maintain their prevention of themselves from this disease. By until, the camp communities and host communities who are most vulnerable are getting COVID-19 response assistances from local non-government organizations, government and faith-based organizations.

**Playing the Roles by Bhamo Diocesan Emergency Response Committee**

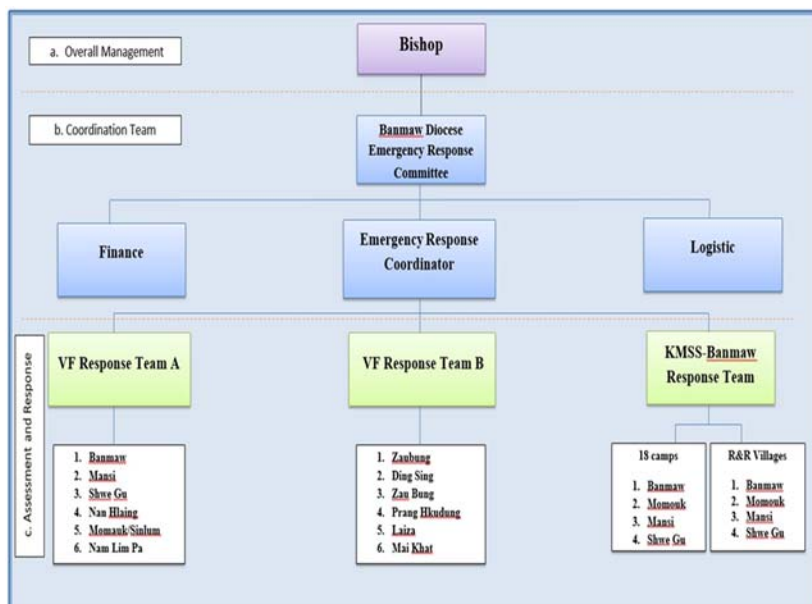


Figure 1 Structure of Bhamo Diocesan COVID-19 ER team

As KMSS-BMO is responding to COVID-19 under the umbrella of Bhamo Diocesan ER team, in accordance with Bhamo Diocese Bishop's order, we all; KMSS-BMO, Parish Priests and Health commission together organized and activated one Diocesan ER team, then developed one TOR for Response action. This team is under management of Diocesan ER Committee and three sub-ERT teams involved; KMSS-BMO ERT, Low-land parish ERT and up-land parish ERT. Sub-teams are implementing the response activities in the target areas especially camps and parish priest areas. Furthermore, Bhamo Diocesan ERT team is in closely coordination with Myitkyina and

Lashio Diocesan ERTs and implementing response activities with fund supports from UNICEF.

<sup>1</sup> Government-controlled area

<sup>2</sup> Non-government-controlled area

**Deliverables Status (20<sup>th</sup> April to 30<sup>th</sup> June)**



*ER 2 Cooked Meal distribution of Migrant returnees from China at Stone village transit point.*

**Provision of Cooked meal to Migrant Workers returned from China through Loi Je Border gate**

By end of June, in collaboration and cooperation with GAD-Momauk, Loi Je COVID-19 response committee and WFP, KMSS-Bhamo provided cooked meal to 400 migrant workers who returned from China trough Loi He gate, in Loi Je community-based quarantine center and Loi Je transit point. KMSS-BMO provide three meals per day for 21 days of people who undergo quarantine at center and some days of people who are waiting at transit center for continuing travel to their original places in main land. In addition, we continue provision of meal to the returnees from China who need to stay

more than 21 days while their waiting time for respective region administration plan. In close collaboration with DSW and GAD, KMSS Bhamo provided two times of one-off cooked meal distribution to 290 migrant returnees from Loi Je transit point at Stone village transit point.

**Provision of Preventive measures**

KMSS-BMO is responding to COVID-19 under umbrella of Bhamo Diocesan COVID-19 Response committee in collaboration with Parish response team. We, team responded in 11 camps in GCA, 5 camps in NCGA, and 13 parish communities, health departments of KIO and government of Bhamo district. With support from Chit Myit Tar Foundation, we provided 2,000 pieces of Mask to Fever check points.



*ER 3 Provision of Soaps into NCGA camps.*

1	Surgical Masks	17,000 pces
2	Cloth Masks	43,868 pce
3	Installation of Hand Washing Station	40 units
4	Infrared thermometers	13 units
5	PPE	40
6	IECs (pamphlets, posters)	1,200 nos.
7	Soaps	22,377 pces





### Provision of Needs to Community-based Quarantine Facilities

KMSS-Bhamo provided assistances to quarantine facilities in Bhamo, Shwe Gu, Mansi and Momauk townships based on assessment and consultation with focal persons. Mainly focused on St Joseph Quarantine center, Pin Sin Kone Quarantine center, Tan Lan quarantine center, and Mai Hkawng Quarantine center. St. Joseph quarantine center is under directly management of Bhamo Catholic Church and KMSS is contributing as financial and technical supporter to be able to run properly, that center is to provide facilities to IDPs who need to undergo quarantine, by June, 19 people were facilitated by this center. 225 people under quarantine were provided cash for daily meal. With the support of UNHCR, we provided mats, mosquito nets and blankets to quarantine facilities. As well as provided necessary assistances to volunteers who are working in St. Joseph Quarantine center.

1	NFI kits	50 kits
2	Mats	100 nos
3	Mosquito nets	100 nos.
4	Blanket	100 nos.
5	Surgical Mask	2,000 pcs
6	Soap	3,000 pces
7	Hand Sanitizer	40 bots
8	Audio system	24 units
9	Room partition	4 quarantine centers
10	Latrines	6 latrines
12	Improved water supply	4 quarantine centers
13	Solar or electrical system assistance	3 quarantine centers
14	Bath rooms	2 quarantine centers



ER 5 Provision of Preventive Measures to Quarantine centers in Bhamo Parish Priest areas



ER 4 Installation of Hand Washing Stations at St. Joseph Quarantine Center.

### Provision of Awareness Raising Activities

Through Parish Diocesan team, in cooperation with UNICEF, media awareness sessions were provided through Office of Social Communication (OSC). Parish based volunteers are providing community awareness of COVID-19 sessions in their respective parish communities.

<https://web.facebook.com/197275734537089/videos/248460449720288> please refer to this link of OSC uploading the COVID-19 awareness sessions.



### Creation of Income of IDP Women

As impact of COVID-19, the people are facing difficulties to earn incomes during this time, we created income opportunity for women who living in the camps. We selected, in consultation with camp management, some women to sew cloth masks for their respective camp population. We supported them in logistics arrangement. We provided 150 MMK for one piece of Mask, in total 85 women benefited from this activity.



ER 6 The IDP women are sewing Cloth Masks in Momauk Mun Bun Camp.

### Improvement of WASH facilities and Social support in Quarantine facilities



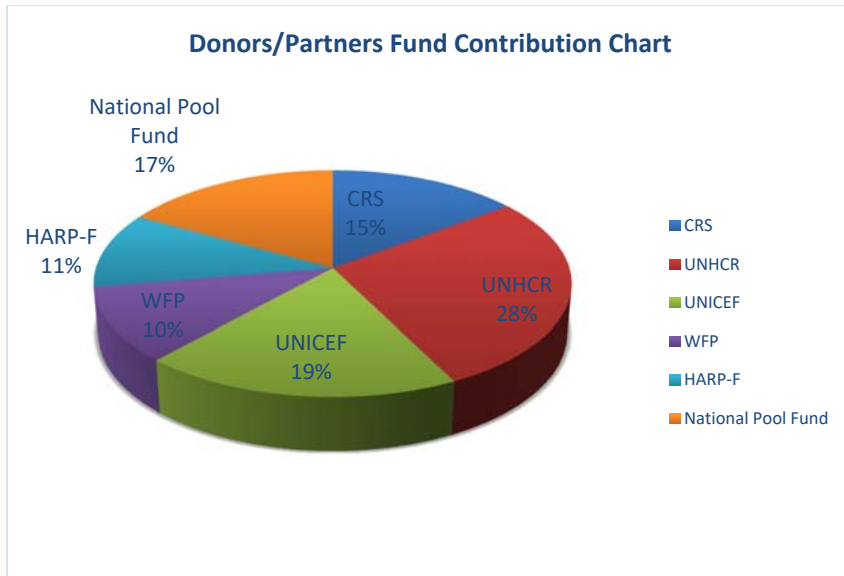
ER 7 Installation of Hand Washing Station in Bhamo Parish Community



ER 8 Volunteers are providing supports to people under quarantine, St. Joseph Center, Bhamo.



**Fund Contribution Status (23<sup>rd</sup> March to 30<sup>th</sup> June)**



- Projects' Duration**
1. UNHCR (April-Dec 2020)
  2. HARP (April to July 2020)
  3. UNICEF WASH (April to September 2020)
  4. National Pool Fund (April to September 2020)
  5. CRS (March to July 2020)
  6. WFP (5<sup>th</sup> June to 15<sup>th</sup> July 2020)

Chart 1 Fund distribution into KMSS-BMO for ER action.

**Fund Liquidation Status (23<sup>rd</sup> March to 30<sup>th</sup> June 2020)**

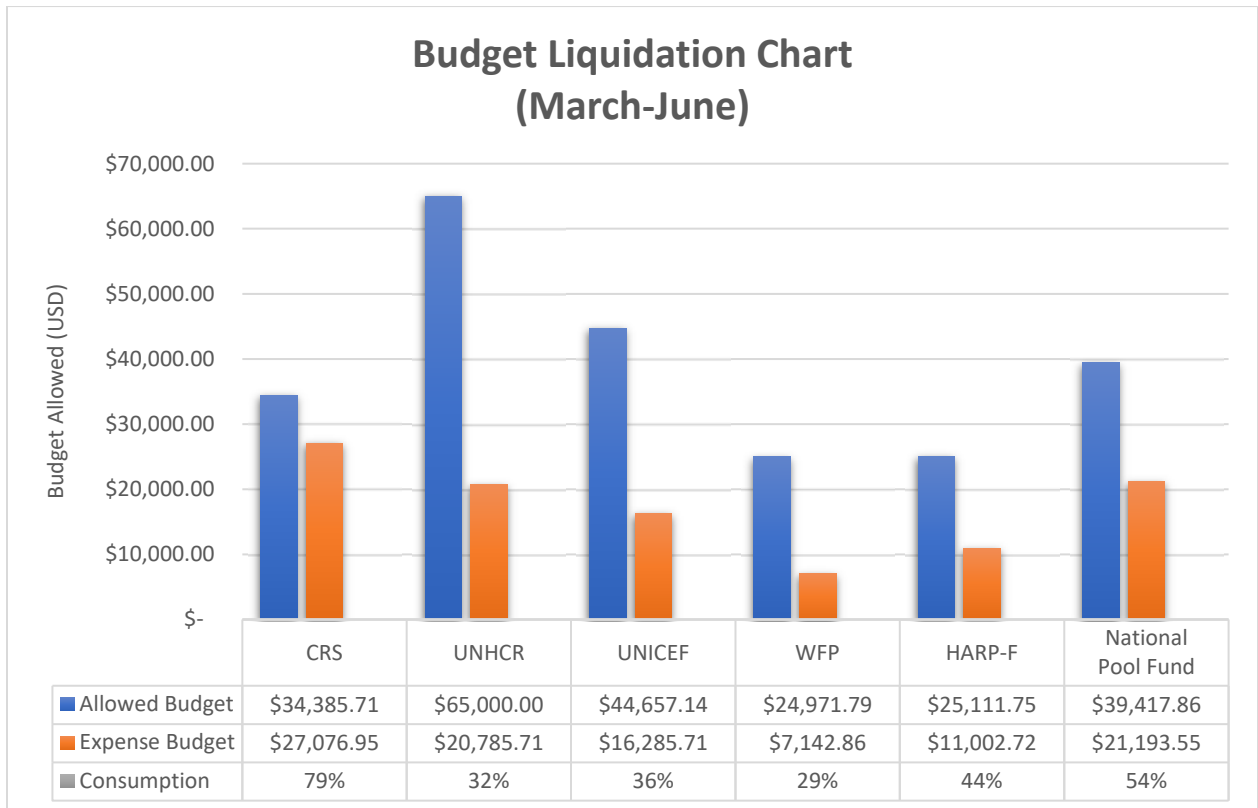


Chart 2 Budget Liquidation of Each Project from March to June, 2020.



**Fund Allocation Status in Implemented Activities in May and June 2020**

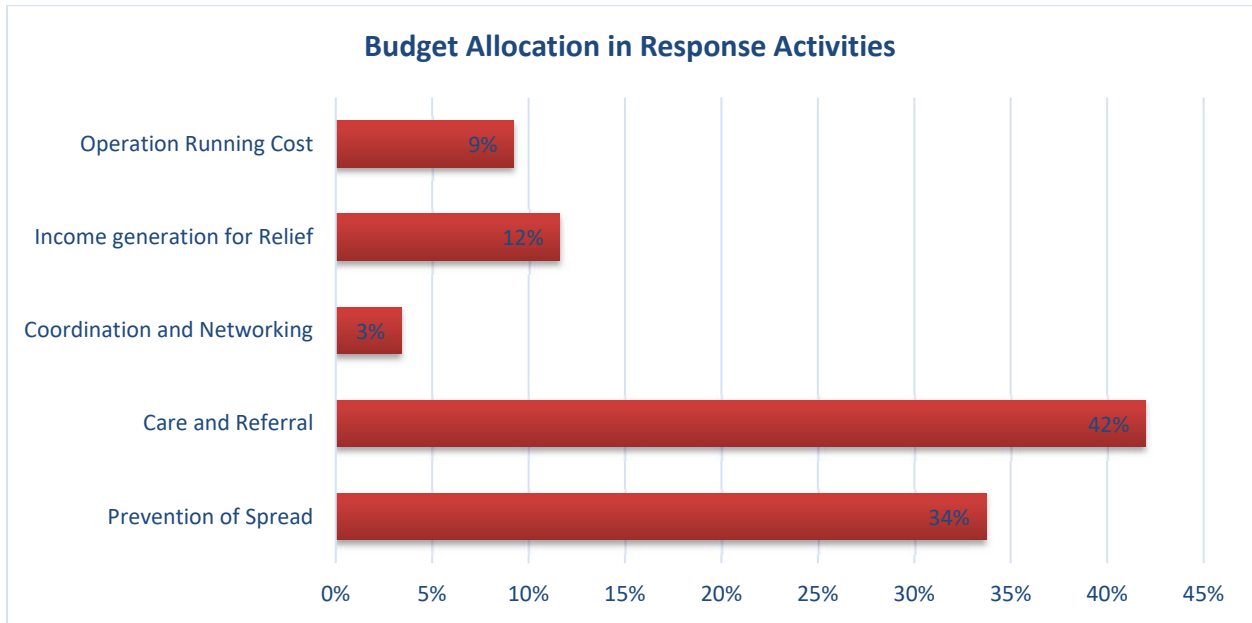


Chart 3 Budget allocation in ER activities in May and June 2020.

**Areas we are implementing**

- Health departments in four townships
- 16 camps in GCA
- 5 camps in NGCA
- 13 Parish Priest areas of Bhamo Diocese