

# Karuna Mission Social Solidarity-Banmaw

## Concept Note for COVID-19 Response Action and Report on COVID-19 22<sup>nd</sup> April, 2020

### 1. Summary

<b>Project Title</b>	Emergency Response to COVID-19 in Parish Communities, conflict affected people and IDPs
<b>Project Focal</b>	Fr. Michael Tang Gun Director Karuna Mission Social Solidarity - Banmaw Mobile Ph: +959-400028082 Email: fr.michaeltanggun@gmail.com Skype: Mike Gun
<b>Project Duration</b>	6 months (23 <sup>rd</sup> March 2020 to 30 <sup>th</sup> September 2020)
<b>Geographical areas covered by project</b>	Banmw, Momauk, Mansi, Shwegu townships
<b>Target Beneficiary</b>	Resident community and IDPs in four townships, both GCA and NGCA
<b>Partnership</b>	Banmaw Diocesan Emergency Response team
<b>Fund Proposed Donors</b>	CRS, UNICEF, UNHCR and LIFT
<b>Planned Budget</b>	USD 236,014.00

### 2. Background

Karuna Mission Social Solidarity, Banmaw Diocese (KMSS-Banmaw) is a faith-based social organization established and mandated by Bishop of Banmaw diocese to serve the poor and the needy as its official social action arm, specifically in the areas of the church's mission with regards to holistic development, environmental protection, welfare and emergency relief services. KMSS-Banmaw has been one of the key local players in the response to the IDP crisis in Kachin from the onset of the emergency, drawing on the organisation's exceptional levels of access to conflict affected communities in both GCAs and NGCAs, and on their extensive grass-roots volunteer network. KMSS-Banmaw is one of the first organization to support voluntary and spontaneous return and resettlement trust on established long standing working

ties and an understanding of what it means to work with a diverse range of stakeholders, humanitarian actors and parties to the conflict.

To address COVID-19 pandemic, since February 2020, KMSS-Banmaw focused its response preparation and actions on the community to be in readiness and preparation to stop transmission and prevent community spread of COVID-19 in the camps and villages around Banmaw, Mansi, Momouk and Shwe Gu townships. KMSS-BMO had already activated emergency response mechanisms by formation of emergency response team, provided cross-cutting awareness of COVID-19 in the communities and IDP camps. KMSS-BMO is closely working with Diocesan ER team in order to serve the people in Banmaw Diocese along with response process.

## 2. Actions to COVID-19 Pandemic

### 2.1. Overall Goal

The overall goal is to prevent transmission and stop spread of COVID-19 by enhancing the preparedness and readiness of the community of Banmaw, Mansi, Momouk and Shwe Gu townships during this crisis situation.

### 2.2. Specific Objectives

- a) To improve coordination platform between humanitarian actors who are working in the target areas during this situation)
- b) To remove social stigma, barriers, misperception and misinformation among the camps community
- c) To improve public health measures by improving hand washing facilities, promoting social distancing, hygiene practices and respiratory etiquette
- d) To improve community surveillance mechanism by enhancing knowledge of the community volunteers and community
- e) To strengthen Quarantine facilities and health care facilities
- f) To increase community capacity for their resilience during this crisis

### 2.3. Target Beneficiaries

Through the points of dissemination mentioned above, KMSS-Banmaw plans to reach out to the following beneficiaries:

- i. **Resident and Returned Communities:** Utilizing its network of 13 Parishes, we plan to reach out the communities across four townships (Banmaw, Masi, Momauk and Shwegu) including non-government-controlled areas through the implementation activities.
- ii. **Frontline Responders:** 6 Caregivers who take care of dispensaries, 85 boarding schools/ECCD Schools, 29 Parish Priests and 100 Volunteers under Parish and health care workers (Nurse, Midwives, Medical doctors, etc) of government and non-governments. As well as the volunteers of fever screening points and quarantine facilities.

- iii. **Quarantine Cases:** 200 suspected cases who must take Quarantine in facility Quarantines and Home Quarantine especially we are targeting who are returning from China and location reporting community transmission. As well as the confirmed or probable cases in the isolation (Hospitals) centers.
- iv. **Internally Displaced People:** in Banmaw GCA and NGCA, KMSS-Banmaw will reach out to 24,139 population in 18 camps. KMSS is active in 28 IDP camps & 4 IDP host communities and will use its presence there to work with respective camp committees.

## 2.4. Planned Activities of COVID-19

### A. Prevention of Spread

- i. COVID-19 Health Awareness: Utilizing Ministry of Health and Sports (MoHS) and WHO produced COVID-19 IEC materials, through KMSS-Banmaw staffs, Camp Committees/volunteers and Parish Volunteers (following safety protocols), we support audio sound system for audio messages, reprint IECs from MoHS and distribute pamphlets and display posters in the prominent public places. In addition to, health messages broadcasting published through social media likewise OSC-Banmaw. Emergency response team members are providing health awareness sessions to the communities.
- ii. Distribution of Masks: We are distributing Surgical Masks to fever screening points, quarantine facilities, frontline responders and communities.
- iii. Hand Washing Practice: In our target areas like IDP camps, Parish communities, return villages and Parish Churches, soaps and hand sanitizers will be provided. Hand-washing posters will be displayed at every hand washing stations as well as improve hand washing facilities where necessary.
- iv. Provision of Infrared thermometer: we support infrared thermometers to fever-screening points, quarantine facilities and health care facilities.
- v. Personal Protection Equipment: KMSS-Banmaw Staffs, Parish Priest, Camp Committees and Volunteers and frontline responders would need masks, thermometers and other basic protection equipments to help them discharge their COVID-19 related responsibilities. These resources are also for government and KIO ethnic service providers in our target areas.

### B. Care and Referral

- vi. Quarantine Facility: From the existing Church infrastructure, Banmaw Diocese has agreed to provide one facility for quarantine. Youth committed volunteers and health workers of Catholic Health Commission will work with Township Health Department to convert these facilities suitable for VID-19 Quarantine. As well as, we are planning to support not only to St. Joseph center but also to other quarantine centers in the camps, villages and quarters implementing under government and

non-government responses. Additionally, we plan to support NFIs and Food packages to cases who must stay Quarantine if need in the QFs.

- vii. Referral System: As we reach out to communities and IDP camps, suspect cases will be identified through volunteers, ERT teams, fever-screening points and facilities. These cases will be referred to appropriate care centers and medical units. This would include cost of transportation, temporary care and others needed as per medical protocols.
- viii. Health Care Facilities: based on coordination with health departments, we are supporting infrared thermometers, IECs reprinting, PPEs and other hygienic materials to the health facilities.

### **C. Income generation and Food Security in the community if totally lockdown and crisis evolution worsen in coming month\*\*\*<sup>1</sup>**

For funds for the below activities, KMSS will propose to donors based on crisis evolution.

- ix. Supporting for income generation: we plan to technical support to improve the capacity of community that can produce Cloth Masks and Hand Sanitizers by themselves and find market for their products. We, in order to avoid NOT STAY HOME, KMSS will support logistics arrangement in procurement of ingredients and required items and market network.
- x. Supporting Farms and Gardens: Distribution of seeds for farms and gardens.
- xi. Supporting basic foods: rice, oils, bean, salt, etc to the most vulnerable families.

### **D. Coordination and Network**

As KMSS-Banmaw and Banmaw Catholic Church associates work across various Parishes low land areas/remote areas, IDP camps both GCA and NGCA and Return villages, it is very crucial to be coordinating and networking. We will be setting up a coordinating and communication unit to get information and track our actions across Banmaw Diocese. We will be providing SitReps to relevant authorities as well as donors regularly. KMSS-Banmaw is good communication and coordination with Parish Priests, Government Public Health Department, CBCM, JST, IRRC, Stakeholders, GAD and KMSS Network.

For projects' regular business continuing and how to integrate and contribute funds into this crisis response, KMSS-Banmaw Project Managers, Director and Program Coordinator are in regularly communication, informing and coordination with donors and partners.

### **E. Operating of the Response actions**

As KMSS-Banmaw activated its emergency responses team, the team was organized by the staffs from our current projects. While ERT are responding to specific activities, non-ERT staffs from the different project will be supporting in the situation assessments, distribution of aid materials, sharing information and working together to improve our works to deliver

---

<sup>1</sup> The activities will be implemented only based on crisis evolution during SIX months.

effective assistances to the beneficiaries along with this crisis. As well as, since we are collaborating with Banmaw Diocesan ERT, our KMSS owned staffs are supporting to Parish team technically, in management and coordination level.

### 3. Planned Budget Breakdown

Srn.	Description	MMK	USD
A.	Prevention	MMK 79,410,000	\$ 57,543
B.	Care and Referral	MMK 219,040,000	\$ 158,725
C.	Coordination and Networking	MMK 8,900,000	\$ 6,449
D.	Operation and Staff	MMK 18,350,000	\$ 13,297
<b>TOTAL</b>		<b>MMK 325,700,000</b>	<b>\$ 236,014</b>

### 4. Assessment on Current Area Situation

As we all know, the number of confirmed Covid19 cases and death in our country is gradually increasing and a lot of migrant workers returning home through the border trade roads. Thus, we can expect more restrictions and isolation for social distancing and even lock down in the coming days. In the midst of COVID-19, NGCA people are totally depending on china sugar cane plantation for their income and livelihood which is being stopped for trading. The people in that areas does not cultivate paddy field and farm, all they depend on China product and now they foresee their social problem, lack of income and poverty will fall while COVID-19 continue long term. In the meantime, transportation availability of both public bus and private travel are being restricted even NGCA and remote Parishes are being hard to send providing materials. For the sake of social distance and worry of infection, IDPs are going back to their place of origin nearby villages in GCA and NGCA.

Government is trying for their best for the facilities of quarantine center in respective places and yet some communities does not agree to have quarantine center which is being hard to manage between migrant workers from the communities and IDP camps. Also, since water insufficient in the summer in the areas, it is one main challenge in the quarantine centers and also in the communities to promote hand washing practices to prevent spread.

### 5. Our deliverable status in April 2020



Figure 1 Distribution of Masks in the Parish areas

#### Prevention

We distributed 5000 pamphlets and 400 posters to 13 parish areas, 18 camps and Banmaw health departments. For Fever screening, we supported 65 infrared thermometers to health departments and 60 to parish areas, IDP camps, R&R villages and Quarter check-points. In order to improve hand washing practices, we financially and logistically supported to the camps and parish area. We delivered 28920 pce of Masks and 15600 soaps to the camps and Parish areas.



Parish volunteers and KMSS staffs provided COVID-19 awareness sessions as cross-cutting activity.

### Care and Referral

We provided food support to one family in 15 miles who are in Home Quarantine. Although there are no cases reported yet in the areas and requested referral support, we delivered some cash advance to the Parish ERT and KMSS response teams for referral transportation, food support and other necessities for cases. We supported financially and logistically to St. Joseph Quarantine center renovation.



Figure 2 Delivery of financial supports for referral cases to Parish volunteers



Figure 3 Coordination meeting with KMSS and Diocesan committees

### Coordination and Networking

We, KMSS-Banmaw, are in regular coordination with government officials, stakeholders, National KMSS office, donors and JST team for collective response actions. We conducted one coordination meeting with Diocesan health committees and formed Banmaw Diocesan ERT in March. Provided technical TOT training of COVID-19 to Diocesan ERT from 2<sup>nd</sup> April to 4<sup>th</sup> April 2020.



Figure 4 Joint visit of Diocese and Government to Preparation of St. Joseph Quarantine Center



Figure 5 Training of Emergency Response team

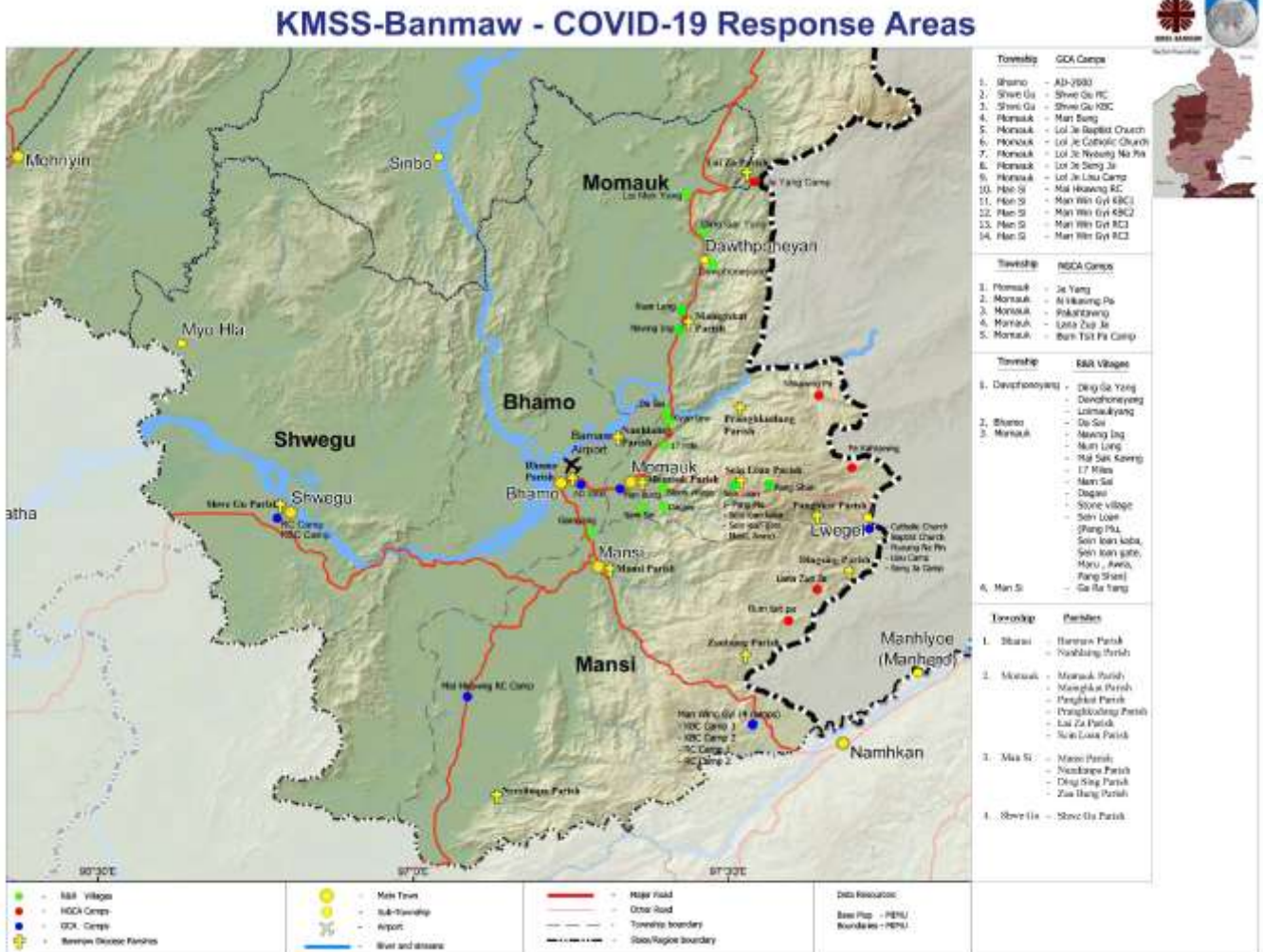


Figure 6 Distribution of Cash for Food of WFP Project

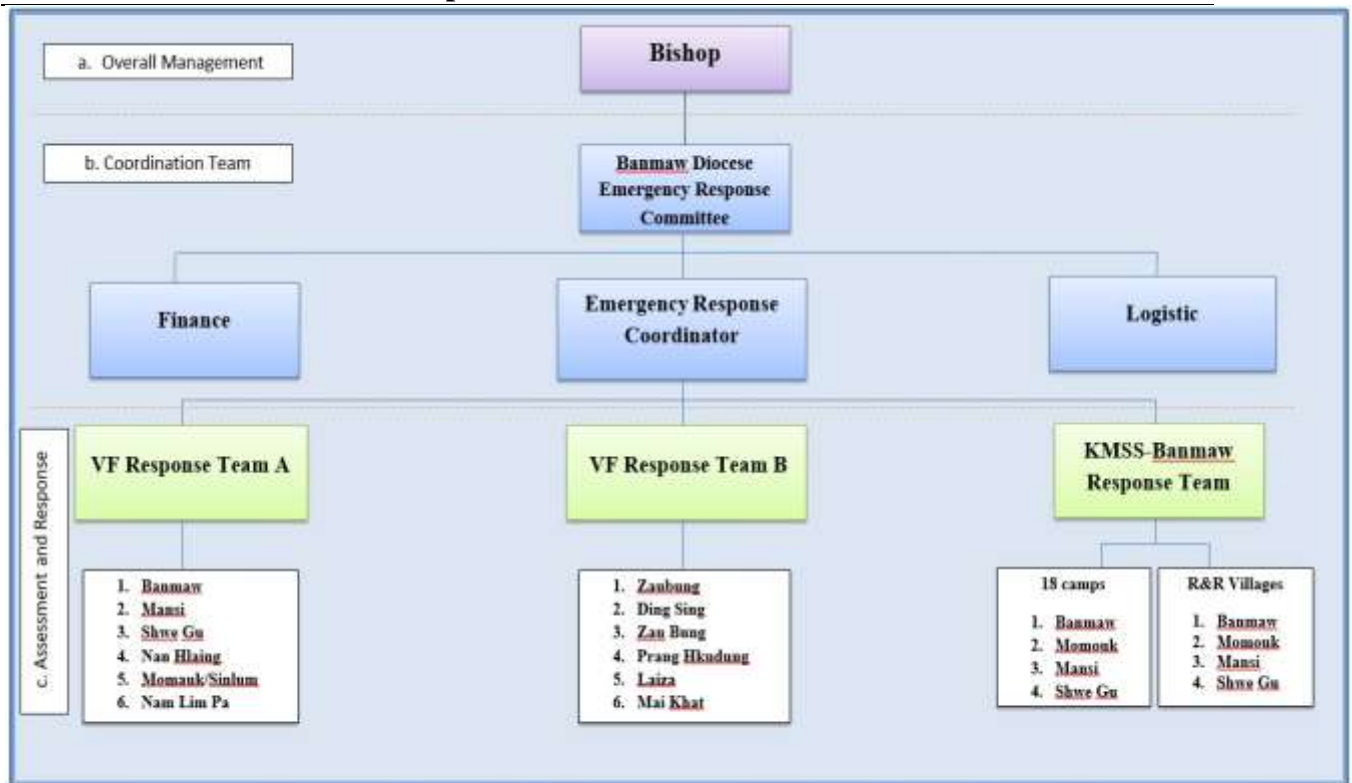
## Food distribution under WFP and HARP

As transmission scenario in Myanmar changed and crisis impacts on transportation and livelihoods, WFP and HARP project distributed food and cash for food for two months in March and April in the project target camps.

## Annex 1: KMSS COVID-19 Target Map



## Annex 2: Banmaw Diocesan Response Committee to COVID-19 Structure



Structure of Banmaw Diocese Emergency Response Committee to COVID-19

Banmaw Diocese Committee will be responsible for:

1. Providing guidance and advice on COVID response by Catholic Church of Banmaw
2. Advocate to the regional and global stakeholders for supporting the coordinated COVID response by Catholic Church of Banmaw
3. Coordinate the COVID response by respective Parishes so as to be able to reach to maximize the impact of COVID response by Catholic Church of Banmaw
4. With inputs from all Parishes, Camp committee and Communities raise funds from different sources for COVID response by Catholic Church of Banmaw
5. Provide updates and reports to government, donors and other partners on COVID response by Catholic Church of Banmaw especially KMSS-Banmaw
6. Focal contact from Banmaw Diocese is Fr. Michael Tang Gun (KMSS-Banmaw Director)